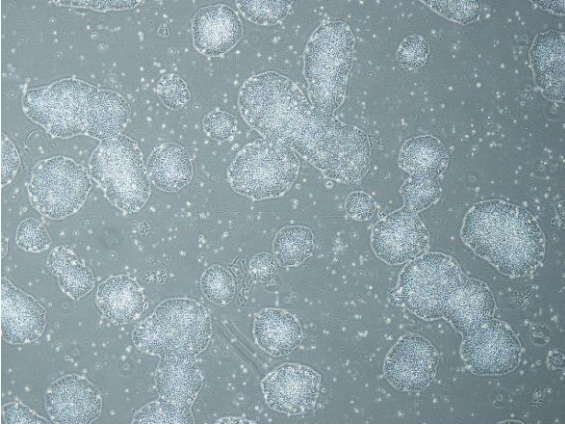
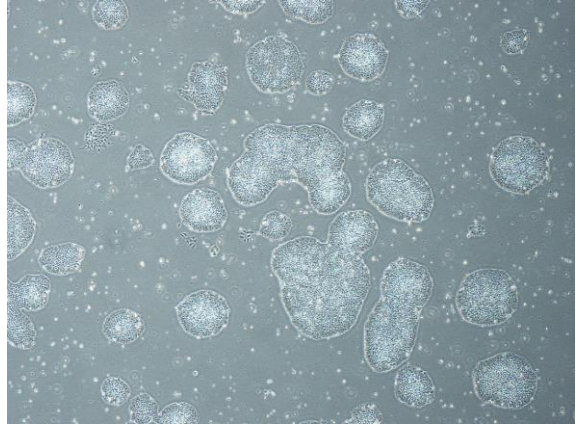


【 CiRA-j-1393 】 Morphology of iPSC colonies

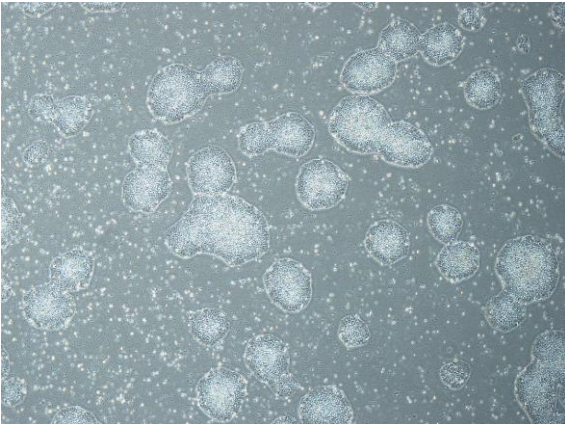
CiRA-j-1393-A: passage-3



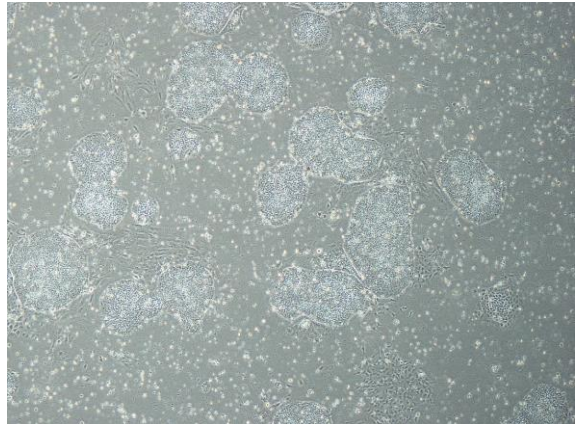
CiRA-j-1393-B: passage-3



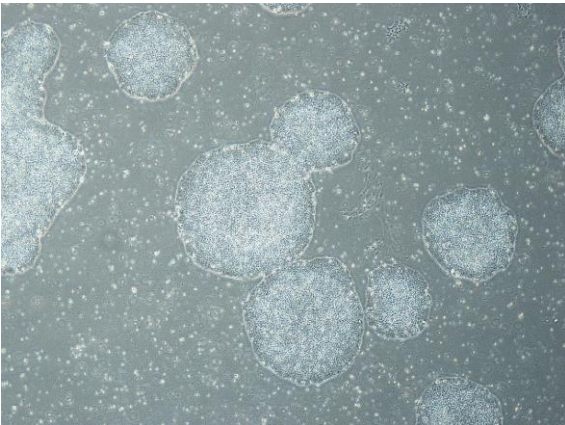
CiRA-j-1393-C: passage-3



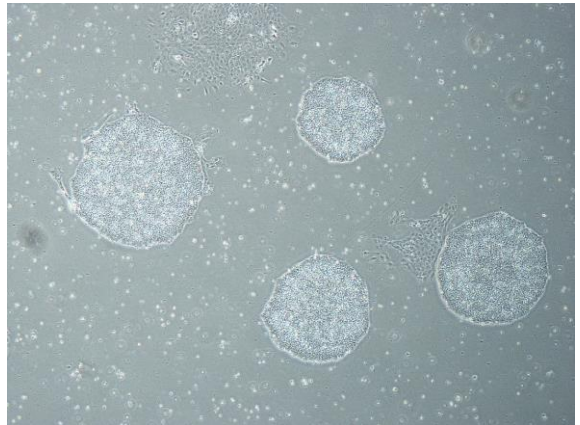
CiRA-j-1393-D: passage-4



CiRA-j-1393-E: passage-3



CiRA-j-1393-F: passage-4



(All images were captured at 4x magnification)